



NYC 5th and 51st, Watercolor, 14 x 11" by Joseph Hughes

## **FIRST PLACE AWARD**

### **Juror's Statement**

This painting has an interesting composition and is well executed. The use of color is probably what made it stand out to me. It is dominated by an almost monochromatic warm yellowish tint that is subdued in intensity which is complimented by touches of blue and red that pop. The handling of the watercolor is also expertly done.

**A Big Thank You to Our Juror,  
Our Sponsors  
and to all who submitted their  
beautiful work!  
Congratulations to the Award recipients!**

### About the Juror

### **Neal Hughes**

Neal Hughes is a graduate of The Philadelphia College of Art (University of the Arts) and resides in the historic town of Medford , New Jersey .

Neal is a Fellow of the American Society of Marine Artists, a signature member of Oil Painters of America and the National Oil & Acrylic Painters Society, a member of the Salmagundi Club, American Impressionist Society and the Mid Atlantic Plein Air Painters Association.

A former illustrator, Neal has been painting professionally for over 35 years. His work is part of the permanent collection of the New Britain Museum of American Art and he has been accepted into numerous juried exhibitions including the national exhibitions of the American Impressionist Society, Oil Painters of American, American Society of Marine Artists and the Portrait Society of America.

His work has been featured in Plein Air Magazine, Southwest Art, American Artist and American Art Collector magazines.



## 2022 Great Outdoors Juried Exhibition

Landscapes ~ Seascapes ~ Other Outdoor Scenes

Online & In Gallery

July 16 ~ September 9, 2022



Save the Tree-Plein Air, Oil, 20 x 16" by Larry Chestnut

### SECOND PLACE AWARD

#### Juror's Statement

I like the bold handling of the paint in this piece. The artist did a good job of showing the form of the trees foliage and the overall shape of the tree against the sky makes an interesting shape. The good value range and contrast also helps to make this a dynamic composition. The immense area of green is complimented by the small red ribbon on the trunk which could almost be overlooked but nicely adds a narrative element to the work.

#### Juror's Statement

This painting creates a world that makes us want to be there. There is a beautiful garden that surrounds a building which looks to be very interesting architecturally but it almost obscured by all of the plants. The painting is dominated by warm colors that are mostly greens and yellows and are complimented by the purple of the clothing on the bench and the nearby plant. The gentleman sitting on the bench who I believe is waiting for Monet seems to be enjoying the serene atmosphere and gives the painting a timeless quality.

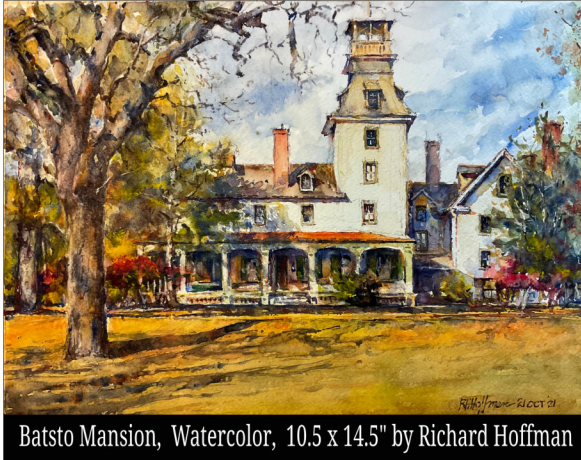


Waiting for Monet, Watercolor, 28 x 20" by Michael Scherfen

### THIRD PLACE AWARD



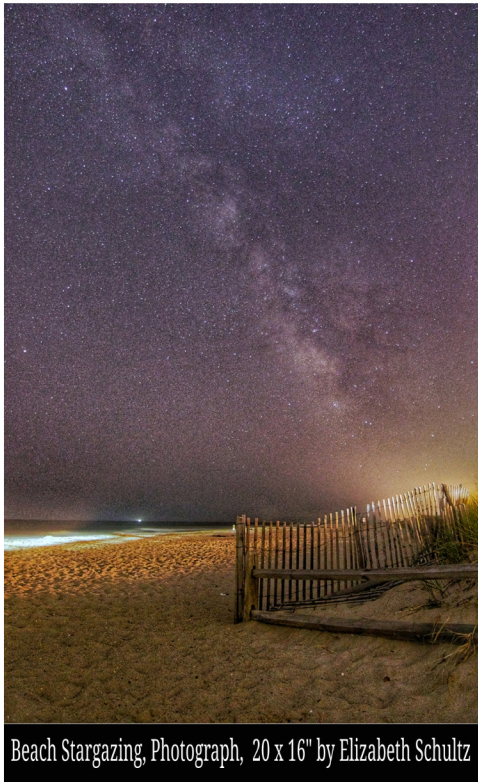
## HONORABLE MENTIONS



Batsto Mansion, Watercolor, 10.5 x 14.5" by Richard Hoffman



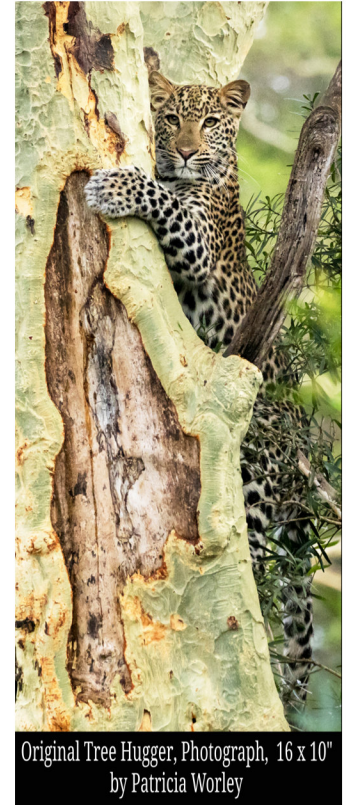
The Fishing Fleet, Oil, 16 x 20" by Dino Sisti



Beach Stargazing, Photograph, 20 x 16" by Elizabeth Schultz



Still Life, Photograph, 20 x 20" by Marie Laforge



Original Tree Hugger, Photograph, 16 x 10" by Patricia Worley



# 2022 Great Outdoors Juried Exhibition

Landscapes ~ Seascapes ~ Other Outdoor Scenes

Online & In Gallery

July 16 ~ September 9, 2022



Latourell's Palette, Photograph, 12 x 18" by Jon Barnes



Twilight Moon, Photograph, 11 x 14" by Ericka Midiri



Milky Way Mud Flats, Photograph, 12 x 18" by Patricia Worley



Swiftcurrent Creek Montana, Oil, 11 x 16" by Laurel Grady



Hay Boy, Charcoal, 29 x 14" by Anthony Venturi



Peaceful Evening on the Maurice River, Photograph, 11 x 14" by Richard Montemurro



Morning Street Scene, Watercolor, 10 x 14" by Richard Hoffman



End of Day, Photograph, 11 x 14" by Richard Montemurro



Sunset, Photograph, 11 x 14" by Richard Montemurro



Morning Light, Photograph, 12 x 18" by Jon Barnes



Moon Over Half Dome, Photograph, 12 x 18" by Jon Barnes



Reflection with Friend, Photograph, 18 x 24" by Ericka Midiri



# 2022 Great Outdoors Juried Exhibition

Landscapes ~ Seascapes ~ Other Outdoor Scenes

Online & In Gallery

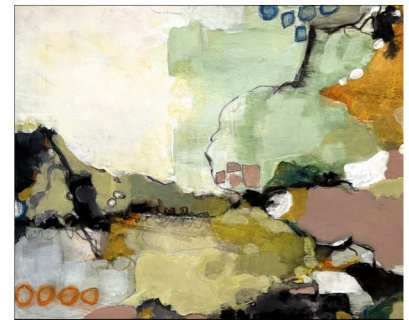
July 16 ~ September 9, 2022



Summer's Last Kiss, Acrylic, 12 x 12" by Maria Morales



Lake Tahoe Panoramic Morning, Photograph, 10 x 25" by Vivian Lewis



Wide Open, Mixed Media, 8 x 10" by Maria Morales



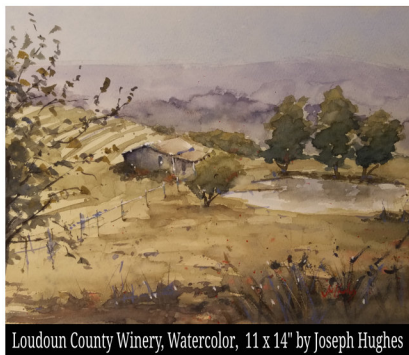
Tiny Piney Islands, Photograph, 12 x 18" by Richard Lewis



Cedar Seclusion, Photograph, 12 x 18" by Richard Lewis



Mullica Magic, Photograph, 12 x 18" by Richard Lewis



Loudoun County Winery, Watercolor, 11 x 14" by Joseph Hughes



Pines in the Mist, Photograph, 12 x 15" by Vivian Lewis



Tide Pools, Watercolor, 11 x 14" by Joseph Hughes



Glacier Blue, Photograph, 11 x 14" by Amy Bash



Friendship Winter Sunset, Photograph, 12 x 18" by Vivian Lewis



Remote Alaska, Photograph, 11 x 14" by Edward Schultz



# 2022 Great Outdoors Juried Exhibition

Landscapes ~ Seascapes ~ Other Outdoor Scenes

Online & In Gallery

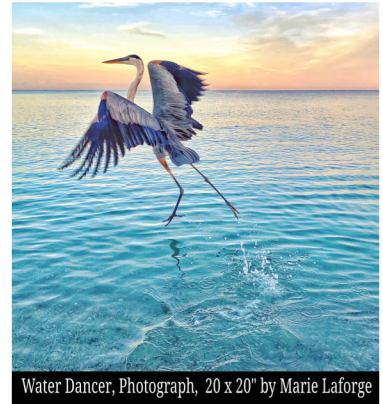
July 16 ~ September 9, 2022



The Florida Garden: Palm and Oleander, Oil, 10 x 8" by Doris Peltzman



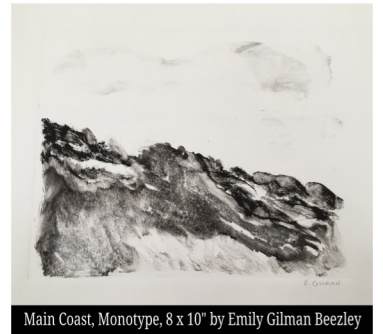
Denali - The High One, Photograph, 7 x 16" by Edward Schultz



Water Dancer, Photograph, 20 x 20" by Marie Laforge



The Cherry Blossom Trees, Glass Mosaic, 13 x 23" by Lydia Congiu



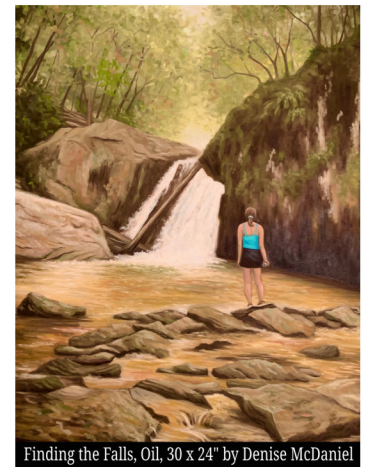
Main Coast, Monotype, 8 x 10" by Emily Gilman Beezley



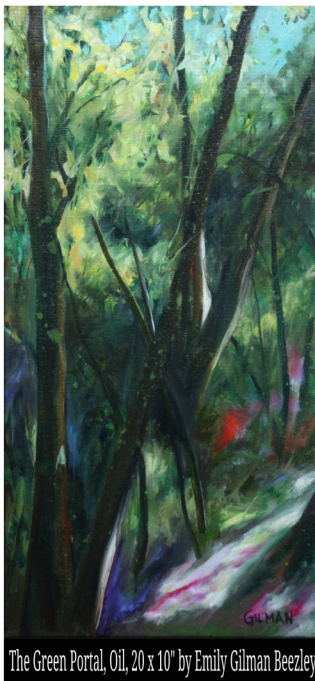
Frentown Bridge, Ink, 10 x 8" by Ali Graves



Memorial for a Trout, Mixed Media Sculpture, 2 x 3.5 x 5 ft. by Arezu Salamzadeh



Finding the Falls, Oil, 30 x 24" by Denise McDaniel



The Green Portal, Oil, 20 x 10" by Emily Gilman Beezley



The Gold That Never Gets Old, Acrylic, 20 x 16" by Ali Graves



Symphony in Blue, Photograph, 20 x 20" by Marie Laforge

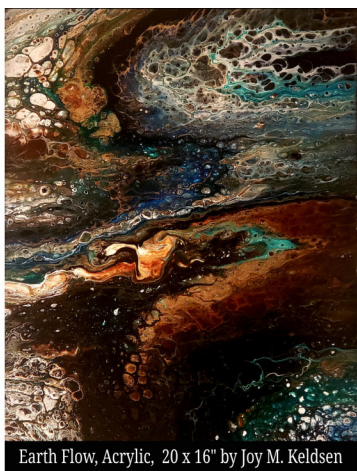


# 2022 Great Outdoors Juried Exhibition

Landscapes ~ Seascapes ~ Other Outdoor Scenes

Online & In Gallery

July 16 ~ September 9, 2022



Earth Flow, Acrylic, 20 x 16" by Joy M. Keldsen



Alaska Range, Photograph, 7 x 16" by Elizabeth Schultz



Birch Meadow, Oil, 20 x 16" by Lisa Hendrickson



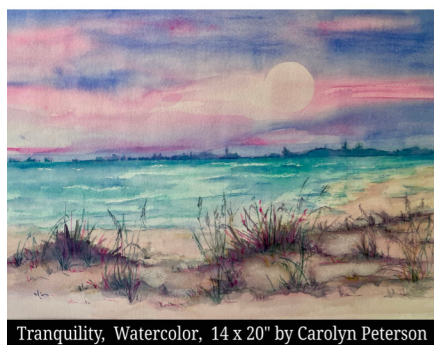
Superior Sunset, Acrylic, 20 x 24" by Joy M. Keldsen



Death and Other Fragile Things, Mixed Media, 15 x 30" by Art Smith



Blue Sunrise, Stained Glass, 18 x 21" by Laura Ginsberg



Tranquility, Watercolor, 14 x 20" by Carolyn Peterson



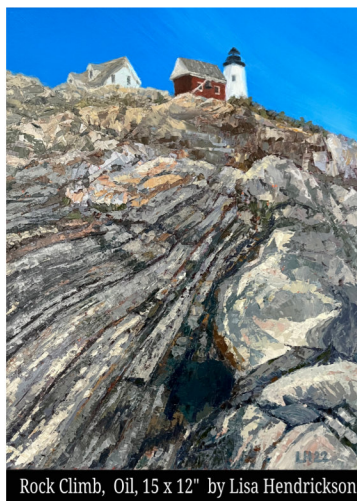
This Dust is Eternal, Mixed Media, 15 x 30" by Art Smith



Falling Ice, Photograph, 11 x 14" by Elizabeth Schultz



Joy of Flight, Oil, 14 x 18" by William Margareta



Rock Climb, Oil, 15 x 12" by Lisa Hendrickson



A Walk In Central Park, Oil, 16 x 20" by Jackie Grabinski



# 2022 Great Outdoors Juried Exhibition

Landscapes ~ Seascapes ~ Other Outdoor Scenes

Online & In Gallery

July 16 ~ September 9, 2022



Chatsworth Winery, Oil, 11 x 14" by Jackie Grabinski



Evening Sail, Photograph, 14 x 11" by John Mottola



Lady of the Sea, Photograph, 11 x 14" by John Mottola



Love My Day Lily Garden, Oil, 9 x 12" by Doris Peltzman



In the Canal, Oil, 8 x 16" by Susan Barnes



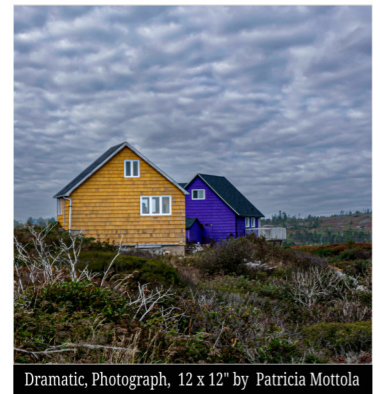
Well Weathered, Photograph, 11 x 14" by John Mottola



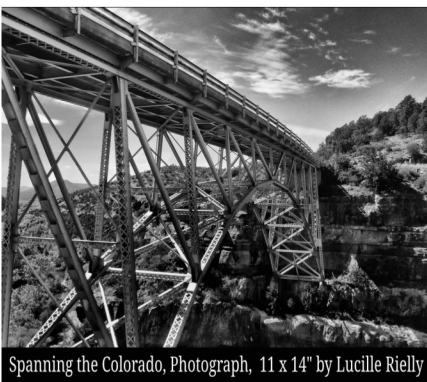
Abandoned, Photograph, 11 x 14" by Lucille Rielly



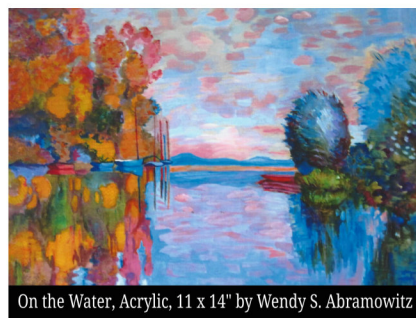
Stormy Day in Amsterdam, Photograph, 12 x 12" by Patricia Mottola



Dramatic, Photograph, 12 x 12" by Patricia Mottola



Spanning the Colorado, Photograph, 11 x 14" by Lucille Rielly



On the Water, Acrylic, 11 x 14" by Wendy S. Abramowitz



Winter Wonderland, Acrylic, 16 x 20" by Toni Frary



## 2022 Great Outdoors Juried Exhibition

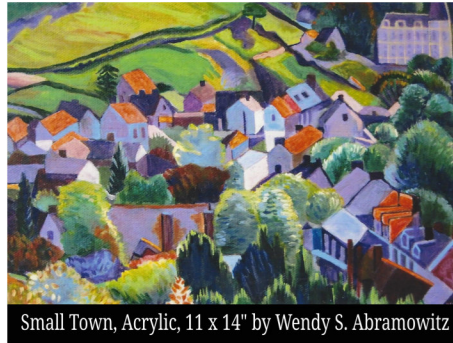
Landscapes ~ Seascapes ~ Other Outdoor Scenes

Online & In Gallery

July 16 ~ September 9, 2022



Venezia, Acrylic, 16 x 12" by Wendy S. Abramowitz



Small Town, Acrylic, 11 x 14" by Wendy S. Abramowitz



Adirondacks, Acrylic, 12 x 8" by Jack Wolynies



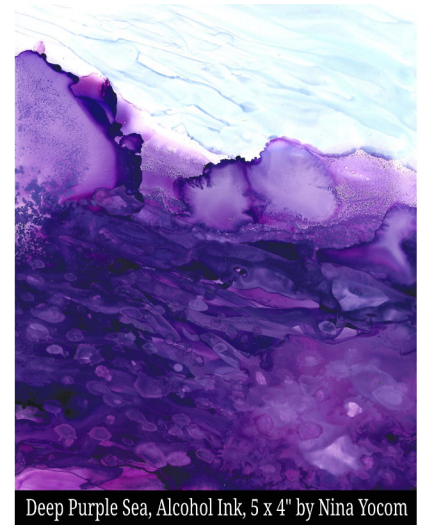
Eastern Tiger Swallowtail, Acrylic, 14 x 11" by Jack Wolynies



Swans Flying Over Lake & Pines, Sterling & Fine Silver, Tanzanite, Sapphires, 1.75 x 1" by Carolyn Jones



View From the Boboli, Florence, IT, Watercolor, 14 x 20" by Michael Scherfen



Deep Purple Sea, Alcohol Ink, 5 x 4" by Nina Yocom

### All works are available for purchase unless noted.

Purchases can be made on the website (<https://www.medfordarts.com>) using the PayPal button or by contacting Medford Arts (see below).

Purchased art will be available for pickup or shipment by the artist at the end of the exhibit.

A representative from the Arts Center or the artist will contact you to coordinate.

A portion of each sale benefits Medford Arts a 501c3 non-profit organization dedicated to serving the community, artists and art lovers for over 20 years.



**A Big Thank You to Our Juror,**

**Our Sponsors**

**and to all who submitted their**

**beautiful work!**

**Congratulations to the Award recipients!**

*Thank you to our sponsor!*

EXHIBITION PROGRAM SPONSOR



**All works are available for purchase unless noted.**

Purchases can be made on the website (<https://www.medfordarts.com>) using the PayPal button or by contacting Medford Arts (see below).

Purchased art will be available for pickup or shipment by the artist at the end of the exhibit.

A representative from the Arts Center or the artist will contact you to coordinate.

A portion of each sale benefits Medford Arts a 501c3 non-profit organization dedicated to serving the community, artists and art lovers for over 20 years.



MADE POSSIBLE BY FUNDS FROM THE BURLINGTON COUNTY BOARD OF COMMISSIONERS, DEPARTMENT OF RESOURCE CONSERVATION, DIVISION OF PARKS, A PARTNER OF THE NEW JERSEY STATE COUNCIL ON THE ARTS.

