

2021 WORKS ON PAPER JURIED EXHIBITION ONLINE

FIRST PLACE AWARD



The Marketplace, Mixed media collage, 18 x 15 " by Debra Friedkin

Juror Statement

Strange, Haunting and Engrossing

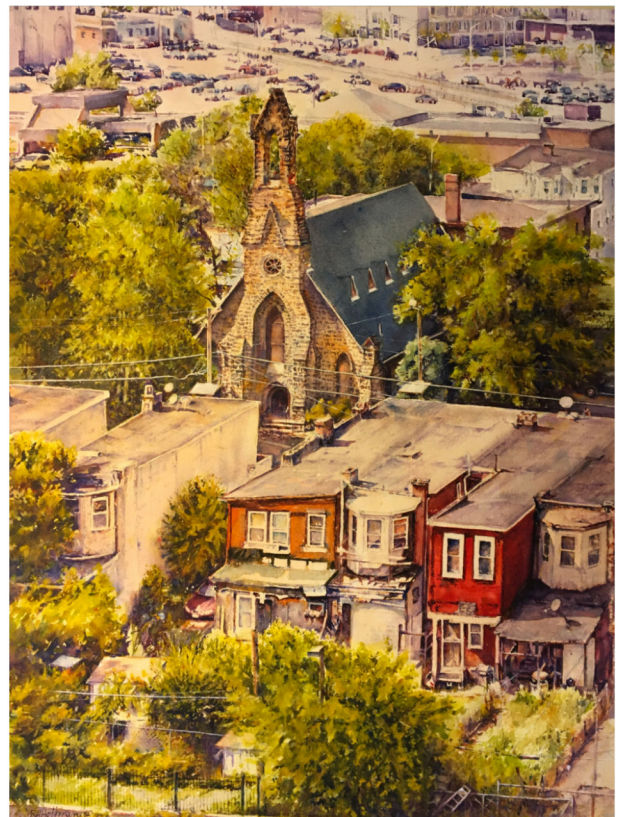
2021 WORKS ON PAPER JURIED EXHIBITION ONLINE

SECOND PLACE AWARD



Bound to Make Scents, Watercolor, 13.75 x 14.75 " by Maria Payer

THIRD PLACE AWARD



Camden History, Watercolor, 29 x 21 " by Richard Hoffman

2021 WORKS ON PAPER JURIED EXHIBITION ONLINE

HONORABLE MENTION AWARDS



Below & Beyond, Micron pens/WC pencil, 24 x 18" by Sherry Dellaria-McGrath



Bobby Munson, Pencil on card stock, 9 x 6.5" by Maria Morales



Extra, Extra, Extra: The Wicked King is Gone, Mixed media, 34 x 26" by Barbara Dirnbach



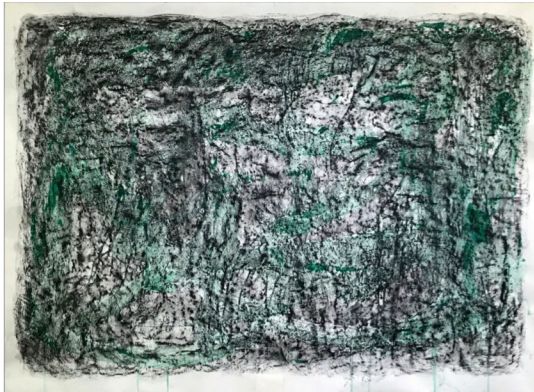
Seaview Snowy Marsh, Pastel, 12 x 18" by Renee Leopardi



Wet Environment Side Two, Acrylic ink & paint on 140# cotton rag, 9 x 5" x 12 pages by Mevi Juliet



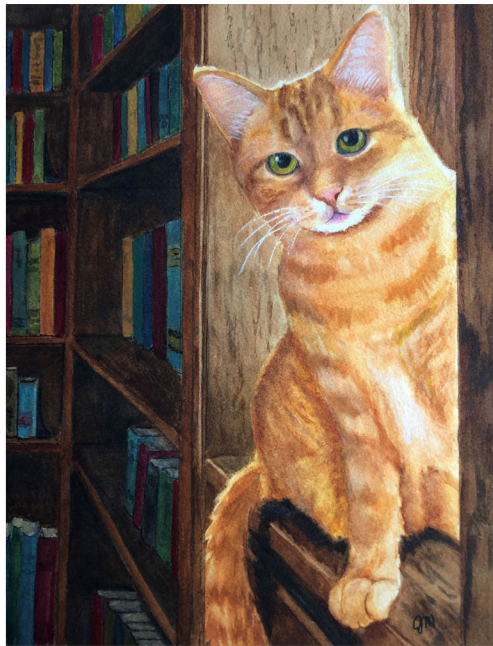
Fall Festival, Watercolor, 21 x 17 " by Joyce McAfee



Rubbed Drawing No. 24, Charcoal/Acrylic on vellum, 32 x 42" by Kathleen Shaver



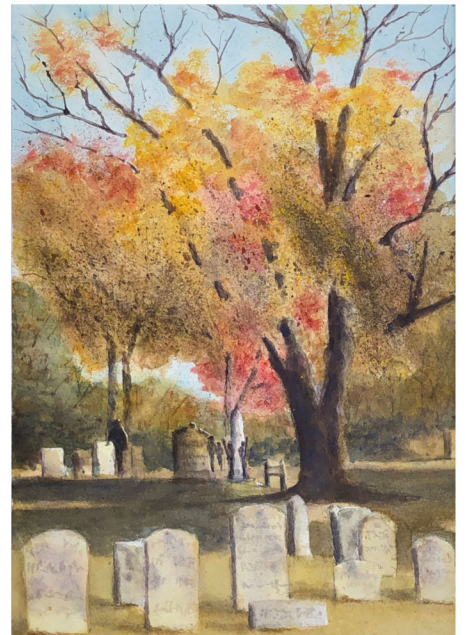
Peonies, Watercolor, 24 x 18 " by Joyce McAfee



Library Cat, Watercolor (framed), 17 x 14 " by Jill Montagna



A Summer's View at Dusk (unframed), Watercolor, 15 x 11 " by Jeffrey Chorney



The Fall of COVID (unframed), Watercolor, 15 x 11 " by Jeffrey Chorney

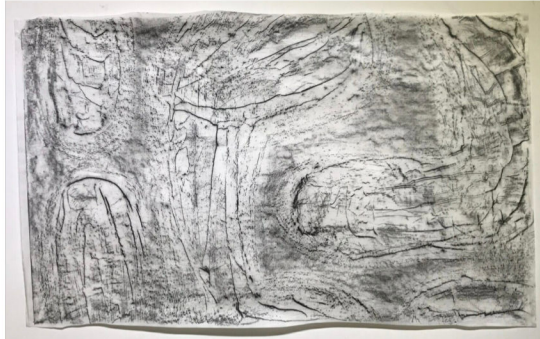
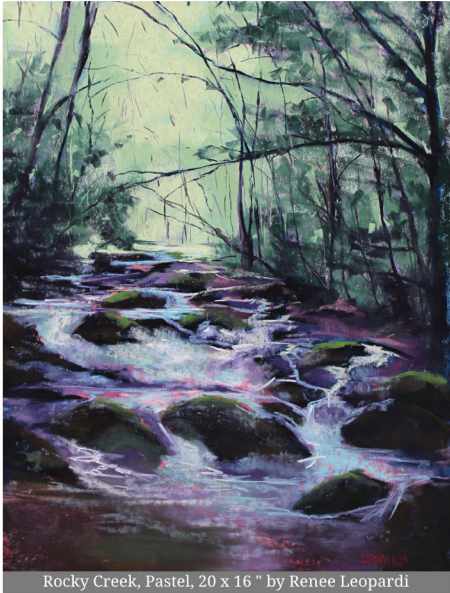


Sunset Beach, Cape May, Watercolor, 11 x 14 " by Jill Montagna



Funding is made possible in part by the New Jersey State Council on the Arts/Department of State, a Partner Agency of the National Endowment for the Arts through a grant to the Burlington County Board of County Commissioners.





Rubbed Drawing No. 5, Charcoal on vellum, 26 x 42" by Kathleen Shaver



Surfs Up, Pastel on Rag paper, 12 x 16" by Libby Lucas

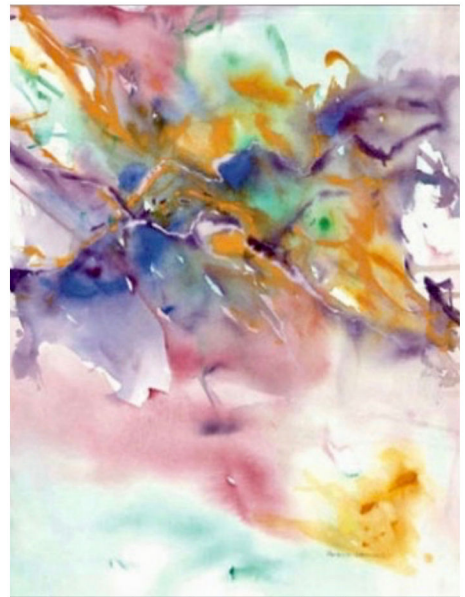
Angel Eyes, Pastel, 12 x 9" by Renee Leopardi



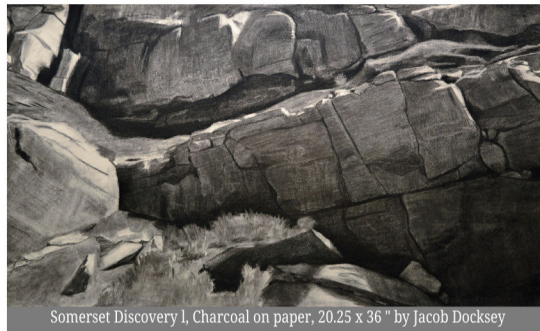
The Magic Box, Pastel on sanded paper, 15 x 12" unframed by Patricia Walker



Somerset Discovery I, Charcoal on paper, 20.25 x 36" by Jacob Docksey



Himalaya, Watercolor on Arches, 26.5 x 20" unframed by Patricia Walker



Somerset Discovery I, Charcoal on paper, 20.25 x 36" by Jacob Docksey



Funding is made possible in part by the New Jersey State Council on the Arts/Department of State, a Partner Agency of the National Endowment for the Arts through a grant to the Burlington County Board of County Commissioners.

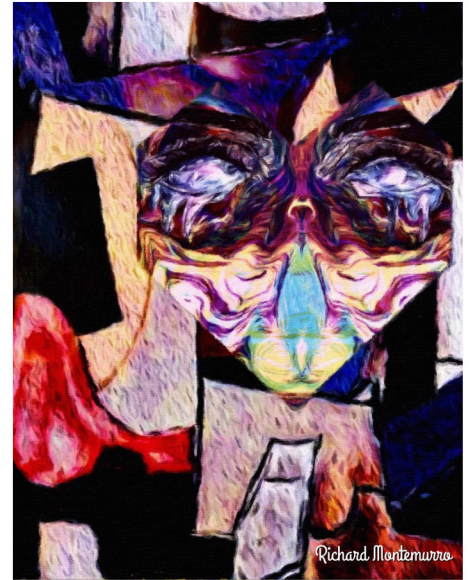




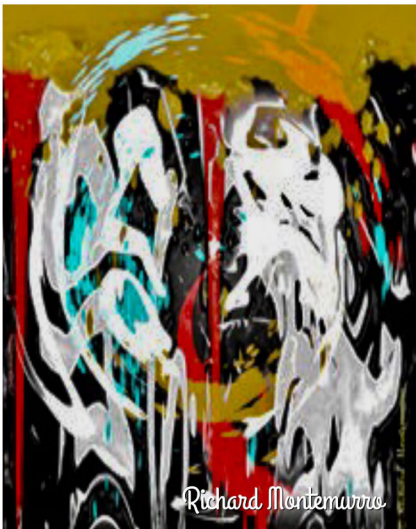
Never Forget, Watercolor, 3.75 x 2.75 " unframed by Patricia Walkar



Jax, Pencil on Bristol paper, 11 x 14 " by Maria Morales



Neckties and Scarfs, Digitalpainted image on poster board, 14 x 11 " by Richard Montemurro



Where's My Mapo, Digital drawing on poster board (unframed), 14 x 11 " by Richard Montemurro



Brilliant Blossoms, Pressed flower collage/cardstock, 12 x 12 " unframed by Margaret Romano



View Behind Barns, Watercolor/140# Arches WC paper, 10.5 x 14.5" unframed by Richard Hoffman



Somerset Discovery II, Charcoal on paper, 20.25 x 36 " by Jacob Docksey



Shore Sunset, Watercolor/140# Arches WC paper, 14 x 21" unframed by Richard Hoffman



Funding is made possible in part by the New Jersey State Council on the Arts/Department of State, a Partner Agency of the National Endowment for the Arts through a grant to the Burlington County Board of County Commissioners.

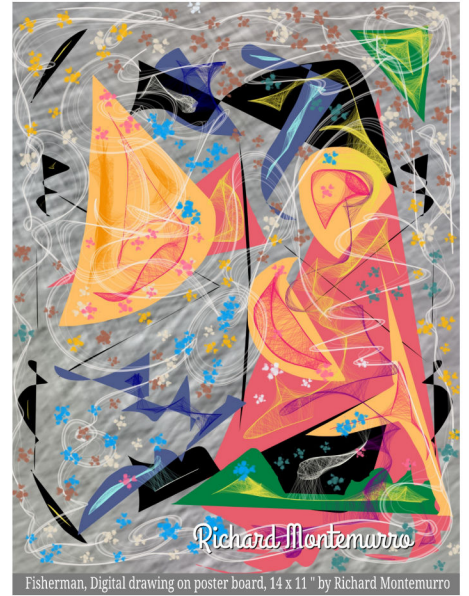




Hunger, Mixed media collage, 18 x 15 " by Debra Friedkin



Red Ascension, Mixed media collage, 12 x 10 " by Debra Friedkin



Fisherman, Digital drawing on poster board, 14 x 11 " by Richard Montemurro



Watching, Watercolor on arches, 20 x 16 " by Robert Lowe



Imagine, Lithograph, 4.5 x 3 " (framed 9 x 7) by Susan Barnes



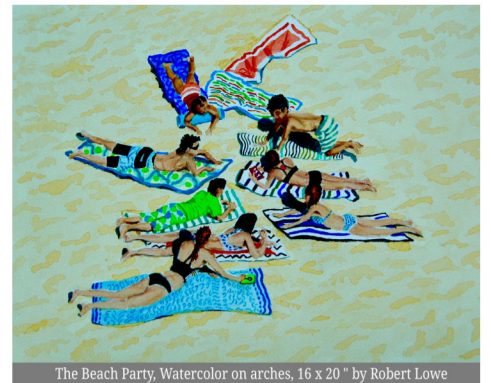
Key West, Watercolor on arches, 20 x 16 " by Robert Lowe



Good Neighbors, Watercolor/Saunders WC paper, 12 x 15 3/8 " by Maria Payer



Wet Environment Side One, Acrylic ink/paint on 140# cotton rag, 9 x 5 " x 12 pages by Mevi Juliet



The Beach Party, Watercolor on arches, 16 x 20 " by Robert Lowe



Funding is made possible in part by the New Jersey State Council on the Arts/Department of State, a Partner Agency of the National Endowment for the Arts through a grant to the Burlington County Board of County Commissioners.





Waiting, Lithograph, 6.5 x 4.5 " (framed 11.25 x 9.25) by Susan Barnes



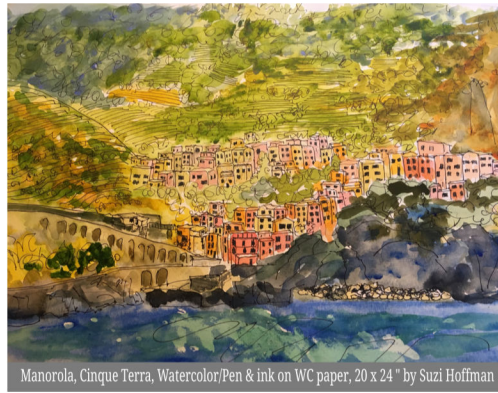
Friends, Pastel, 14 x 18 " by Nancy Mullins



Farmers Market Bouquet, Inks on Yupo, 26 x 20 " by Doris Peltzman



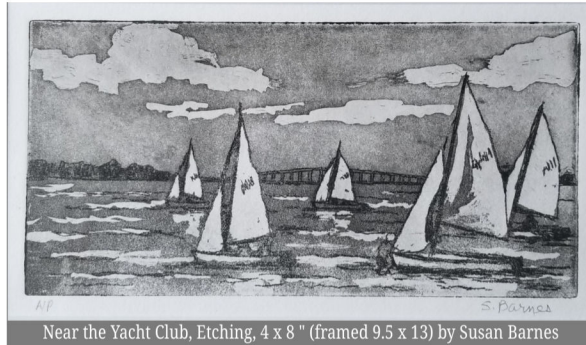
Neither Snow Nor Sleet, Gesso/Watercolor on paper, 21 x 14 " by Carolyn Peterson



Manorola, Cinque Terra, Watercolor/Pen & ink on WC paper, 20 x 24 " by Suzi Hoffman



Dorsoduro Venice, Watercolor/Pen & ink on WC paper, 24 x 20 " by Suzi Hoffman



Near the Yacht Club, Etching, 4 x 8 " (framed 9.5 x 13) by Susan Barnes



Amalfi Resident, Watercolor/Pen & ink on WC paper, 20 x 24 " by Suzi Hoffman



Discarded, Watercolor on paper, 22 x 35 " by Barbara Tracy



Dancing Shadows, Watercolor on paper, 16 x 20 " by Barbara Tracy



Funding is made possible in part by the New Jersey State Council on the Arts/Department of State, a Partner Agency of the National Endowment for the Arts through a grant to the Burlington County Board of County Commissioners.





Parisian Vibe, Oil on Arches, 30 x 22 " by Doris Peltzman



Reflections, Watercolor on Arches (framed), 16.75 x 19 " by Judith Schimmel



Time, Mixed media, 33 x 27 " by Barbara Dirnbach



Evening, Oil on Arches 300lb. paper, 10 x 12 " by Keith A. Leitner



Momentum, Oil on watercolor paper, 30 x 20 " by Doris Peltzman



Empty Beds, Woodcut on BFK, 12 x 15 " by Cassidy Ely



Arrowheads, Watercolor on paper (framed), 15 x 13.5 " by Thomas Chiola



Pakim Pond, Watercolor on Arches (unframed), 10.5 x 13.5 " by Judith Schimmel



Spring Palette, Watercolor on paper (framed), 20 x 16 " by Thomas Chiola



Funding is made possible in part by the New Jersey State Council on the Arts/Department of State, a Partner Agency of the National Endowment for the Arts through a grant to the Burlington County Board of County Commissioners.





Woman in Motion, Mixed media, 30 x 24 " by Barbara Dirnbach



Swiss Guard, Watercolor, 34 x 14 " by Michael Scherfen



Remember When, Micron pens/WC pencil, 20.5 x 16.5" by Sherry Dellaria-McGrath



A Walk in the Woods, Micron pens/WC pencil, 11 x 14" by Sherry Dellaria-McGrath



Something to Crow About, Oil, 12 x 16" by Rose Sinatra



Funding is made possible in part by the New Jersey State Council on the Arts/Department of State, a Partner Agency of the National Endowment for the Arts through a grant to the Burlington County Board of County Commissioners.





Thank you to our juror !

James Toogood

James Toogood is a Painter working primarily in watercolor and works on paper who studied painting at Pennsylvania Academy of Fine Arts.

The American Watercolor Society, the National Watercolor Society, Allied Artists of America and the Philadelphia Sketch Club have elected him as a member.

His works are in several museums in the US as well as galleries in Bermuda.

James is the author of the book Incredible Light and Texture in Watercolor.

He teaches at the National Academy of Design and Pennsylvania Academy of Fine Arts.

Congratulations to all the
awards recipients
and to all
who shared their beautiful work