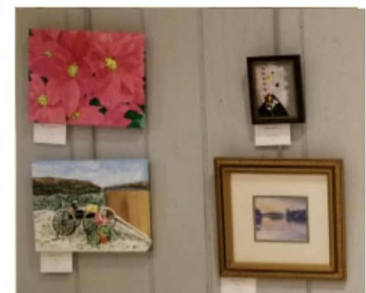
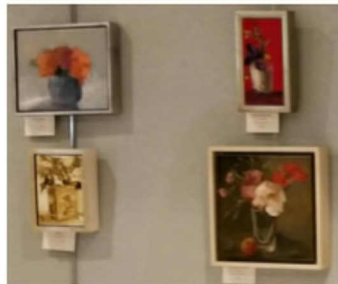




Presents

2020 Small Works Exhibition & Sale

All media



November 20, 2020 ~ January 7, 2021
Online



Thank you to our juror !

Frances Andahazy

Franny is an honors graduate from Massachusetts College of Art, with a BFA in painting and art education.

As well as being a Fine Art Painter she has served as

Gallery Curator, Art Consultant, Instructor, Juror, Set Designer, Creative Director and CEO.

An artist for over 50 years, she founded and developed her own award-winning special events design company.

She also founded, and maintained for fourteen years, Oceanside 17 Studio and Gallery on the south shore of Boston.

Most recent ventures included a pop up gallery Contour 19 in Boston's Design and Innovation Center and Solace Studio and Gallery on Long Beach Island, NJ

Congratulations to all the
awards recipients
and to all
who shared their beautiful work



Funding is made possible in part by the New Jersey State Council on the Arts/Department of State, a Partner Agency of the National Endowment for the Arts through a grant to the Burlington County Board of County Commissioners.



FIRST PLACE AWARD



Lonely Aspen, Photograph, 8 x 12 inches by Jon Barnes

Juror's Statement

Lonely Aspen

I like the accidental capture of the lone lime tree within the misty trees. I also like the hint of green on the right hand side which makes a nice balance. Great piece and visual eye candy for viewer to rest and stay awhile.



Funding is made possible in part by the New Jersey State Council on the Arts/Department of State, a Partner Agency of the National Endowment for the Arts through a grant to the Burlington County Board of County Commissioners.



SECOND PLACE AWARD



Me Amongst the Angels, Etching, 8 x 12" by Dan Kirchhefer

THIRD PLACE AWARD



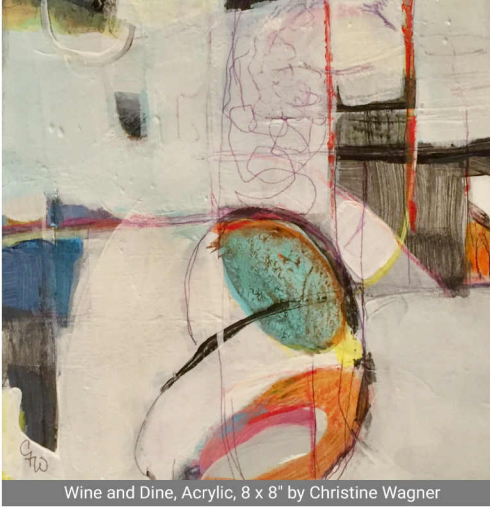
At Kirby's Mill, Watercolor, 10 x 6 " by Richard Hoffman



Funding is made possible in part by the New Jersey State Council on the Arts/Department of State, a Partner Agency of the National Endowment for the Arts through a grant to the Burlington County Board of County Commissioners.



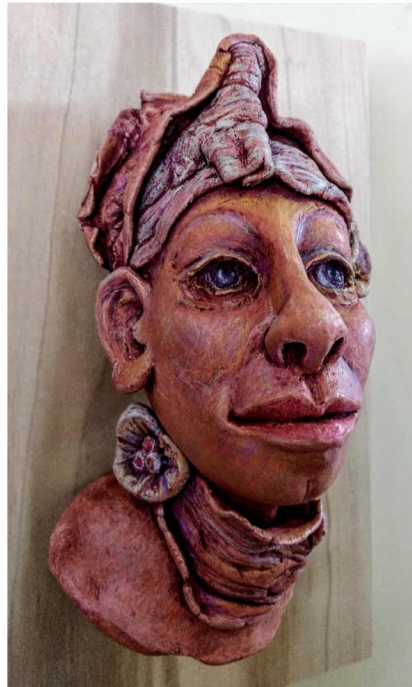
HONORABLE MENTION AWARDS



Wine and Dine, Acrylic, 8 x 8" by Christine Wagner



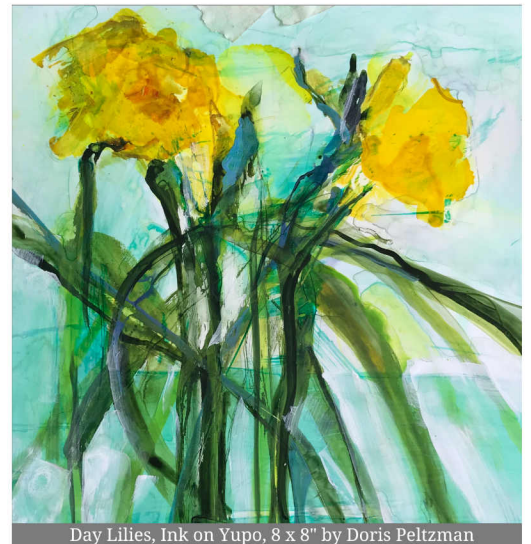
Corona Poetry, Laser cut acrylic/nuts & bolts, 5 x 5 x 5" by Michael Kolitsky



Dikarya, Clay/colored pencil/metallic wax/mounted on wood, 11 x 8 x 5" by Pamela Day



Butterfly Migration Field Trip, Mixed media, 7 x 12" by Caryn Blum



Day Lilies, Ink on Yupo, 8 x 8" by Doris Peltzman

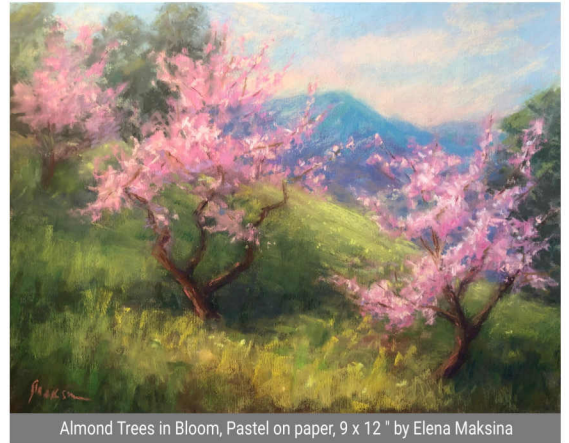


Funding is made possible in part by the New Jersey State Council on the Arts/Department of State, a Partner Agency of the National Endowment for the Arts through a grant to the Burlington County Board of County Commissioners.





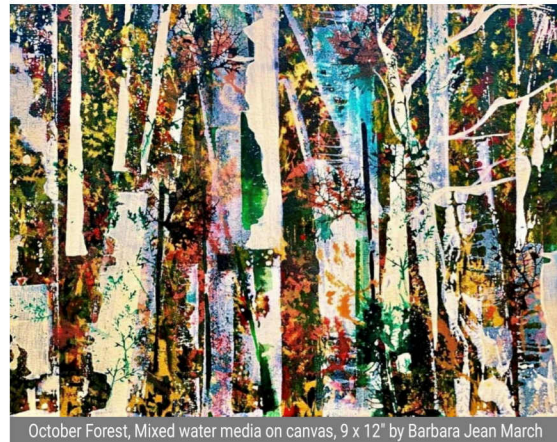
Devil's Tower, Photograph, 8 x 12 " by Jon Barnes



Almond Trees in Bloom, Pastel on paper, 9 x 12 " by Elena Maksina



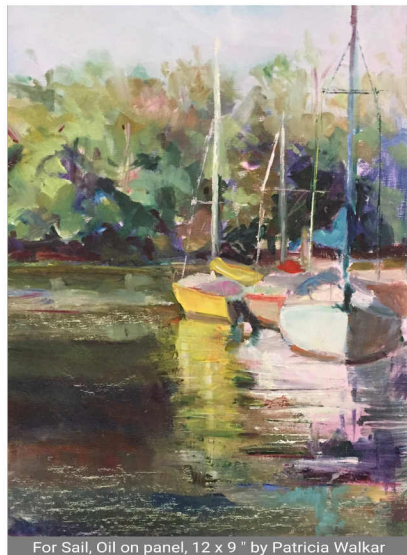
Ponte di Rialto, Watercolor, 5 x 7 " by Jeffrey Chorney



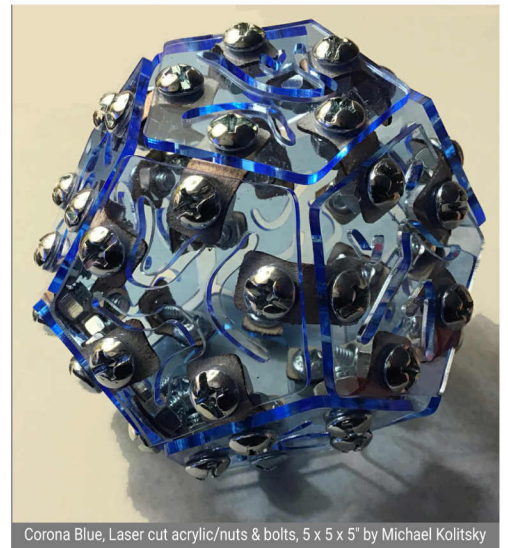
October Forest, Mixed water media on canvas, 9 x 12" by Barbara Jean March



Drift 01, Plant & silk fibers on fishing net, 12 x 8" by Amy Usdin



For Sail, Oil on panel, 12 x 9 " by Patricia Walker



Corona Blue, Laser cut acrylic/nuts & bolts, 5 x 5 x 5" by Michael Kolitsky



Funding is made possible in part by the New Jersey State Council on the Arts/Department of State, a Partner Agency of the National Endowment for the Arts through a grant to the Burlington County Board of County Commissioners.





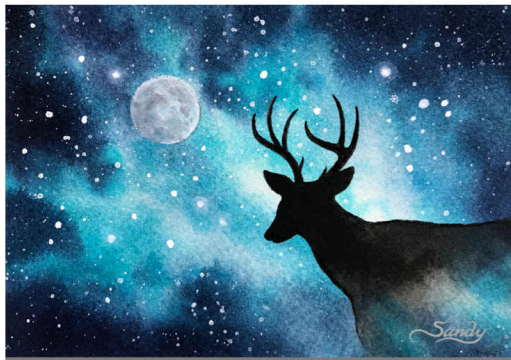
Horace, Clay/colored pencil/metallic wax/mounted on wood, 11 x 8 x 5" by Pamela Day



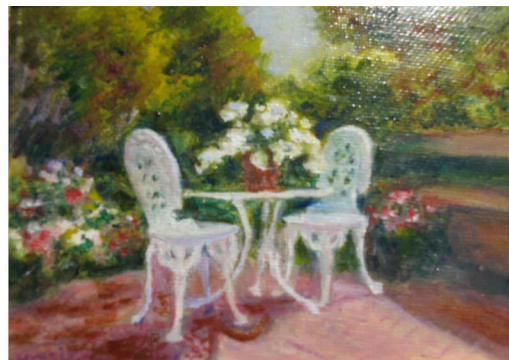
Ogunquit Cliffs, Watercolor, 11 x 7.5" by Robert Lowe



The Babcock Mill, Photograph, 8 x 12" by Tom Holding



Wandering Spirits, Watercolor, 3.5 x 5" by Sandy Sandy



Garden Table & Chairs, Oil, 5 x 7" by Marlene Craig



Cerulean and Carmen Down by the School Yard, Mixed media, 7 x 12" by Caryn Blum



Musical Trees, Collage, 8 x 10" by Joy Hoffman



Funding is made possible in part by the New Jersey State Council on the Arts/Department of State, a Partner Agency of the National Endowment for the Arts through a grant to the Burlington County Board of County Commissioners.





Cape May, Oil on Canvas, 8 x 11" by Dino Sistilli



Late Afternoon at Batsto, Watercolor, 7 x 10 " by Richard Hoffman



Flowers, Peach & Shell, Oil on linen, 8 x 10 " by Susan Barnes



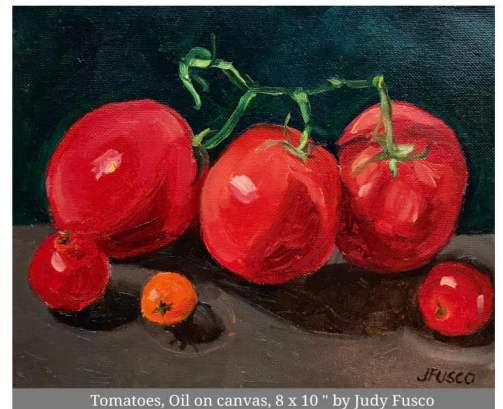
Shore Thing (unframed), Watercolor, 7.5 x 10 " by Jeffrey Chorney



Lilacs and Scissors, Oil on canvas, 9 x 12 " by Elena Maksina



Equilibrium of Color and Space, Mixed Media, 5 " diameter by Maddey Wiker

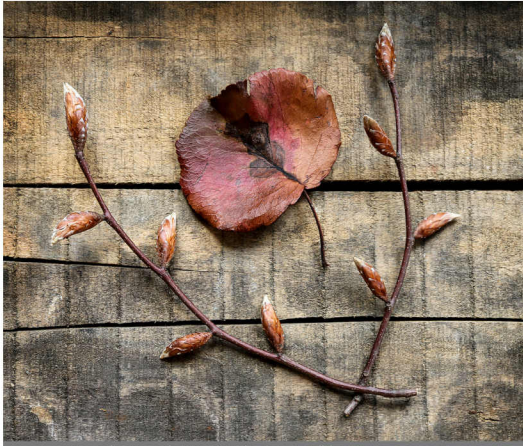


Tomatoes, Oil on canvas, 8 x 10 " by Judy Fusco



Funding is made possible in part by the New Jersey State Council on the Arts/Department of State, a Partner Agency of the National Endowment for the Arts through a grant to the Burlington County Board of County Commissioners.

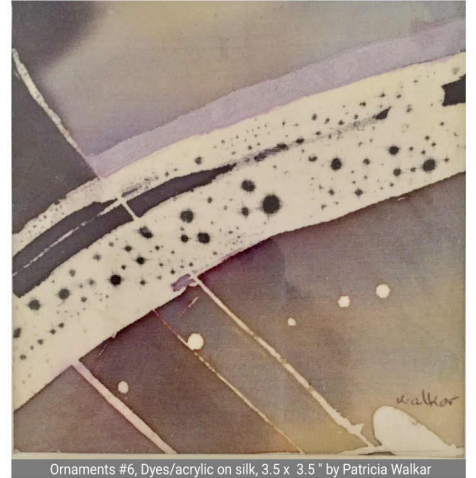




Simplicity, Photograph, 8 x 10" by Diane Emerson



Dark Winter, Clay/acrylic gouache/metallic wax/mounted on wood, 11 x 8 x 5" by Pamela Day



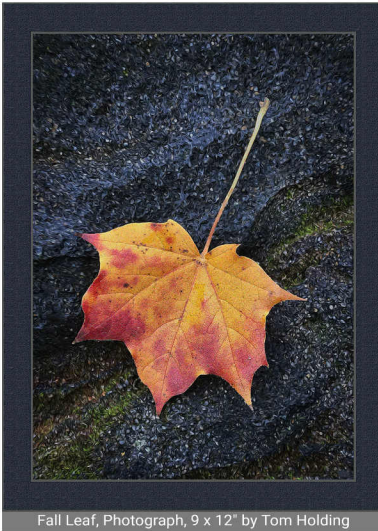
Ornaments #6, Dyes/acrylic on silk, 3.5 x 3.5" by Patricia Walker



Maine Woods, Watercolor, 11 x 7.5" by Robert Lowe



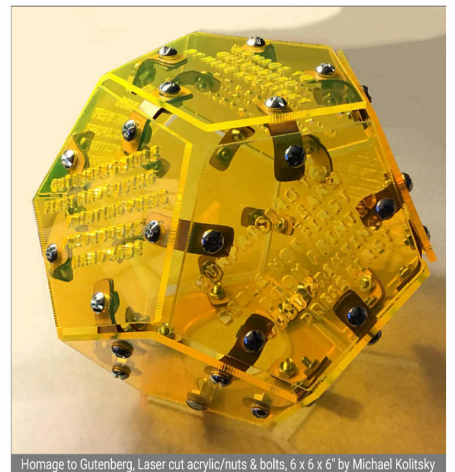
Graceful Nature, Pressed flower collage, 10 x 8" by Margaret Romano



Fall Leaf, Photograph, 9 x 12" by Tom Holding



Astronaut in Triangles, Collage, 8 x 10" by Joy Hoffman

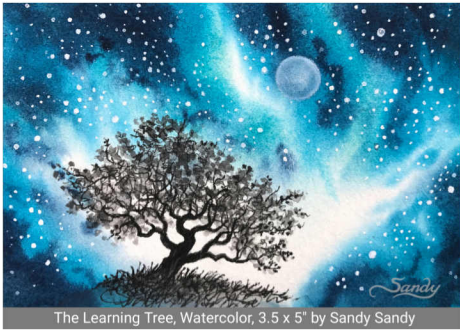


Homage to Gutenberg, Laser cut acrylic/nuts & bolts, 6 x 6 x 6" by Michael Koltzky



Funding is made possible in part by the New Jersey State Council on the Arts/Department of State, a Partner Agency of the National Endowment for the Arts through a grant to the Burlington County Board of County Commissioners.





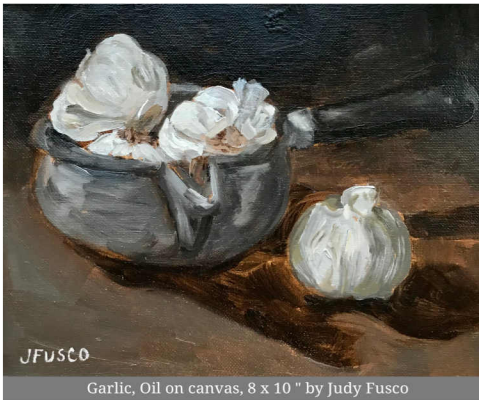
The Learning Tree, Watercolor, 3.5 x 5" by Sandy Sandy



Lone Meridium, Oil on Canvas, 12 x 9" by Theodore Heublein

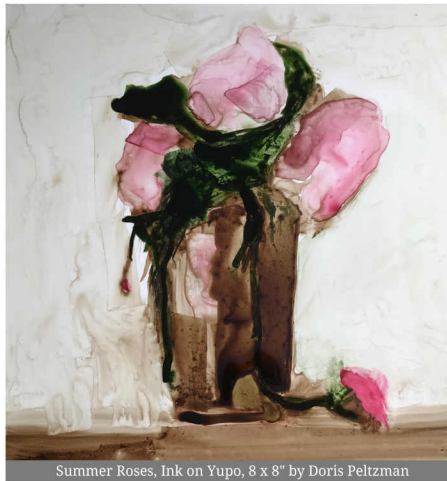


Raggedy Ann & Friends, Watercolor, 5 x 7" by Marlene Craig



JFUSCO

Garlic, Oil on canvas, 8 x 10" by Judy Fusco



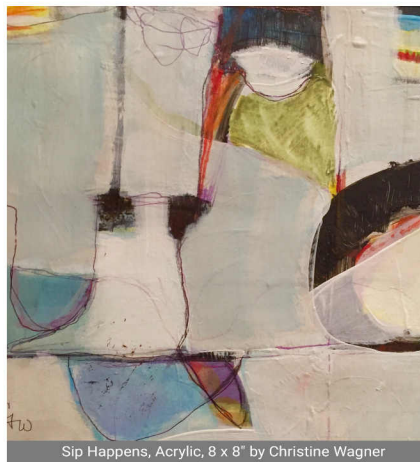
Summer Roses, Ink on Yupo, 8 x 8" by Doris Peltzman



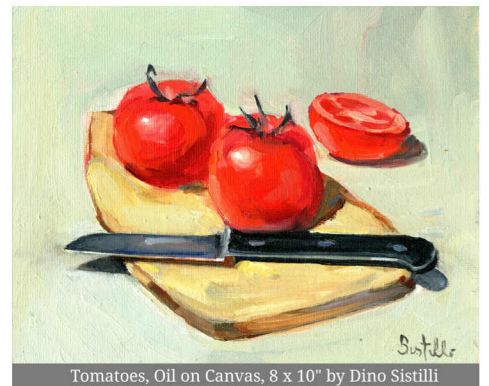
Morven Detail, Watercolor, 7.5 x 10" by Richard Hoffman



On the Beach with Gulls, Oil on linen, 9 x 12" by Susan Barnes



Sip Happens, Acrylic, 8 x 8" by Christine Wagner



Tomatoes, Oil on Canvas, 8 x 10" by Dino Sistilli



Funding is made possible in part by the New Jersey State Council on the Arts/Department of State, a Partner Agency of the National Endowment for the Arts through a grant to the Burlington County Board of County Commissioners.





Light of Renewal, Photo on canvas, 9 x 11" by Ericka Midiri



Peach Farm, Pastel on paper, 9 x 12" by Elena Maksina



Green Sunglasses, Acrylic/Embroidery thread/beads, 5 x 7" by Maddey Wiker



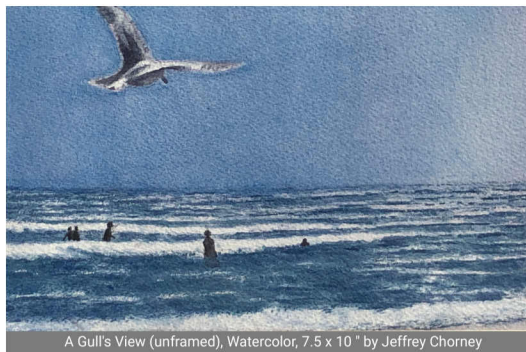
Waiting for Winter, Photograph, 9 x 7.5" by Diane Emerson



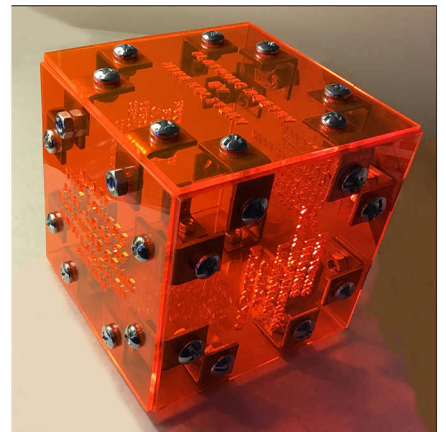
Ornaments #5, Dyes/acrylic on silk, 3.5 x 3.5" by Patricia Walkar



Growing Season Sampler, Pressed flower collage, 8 x 8" by Margaret Romano



A Gull's View (unframed), Watercolor, 7.5 x 10" by Jeffrey Chorney

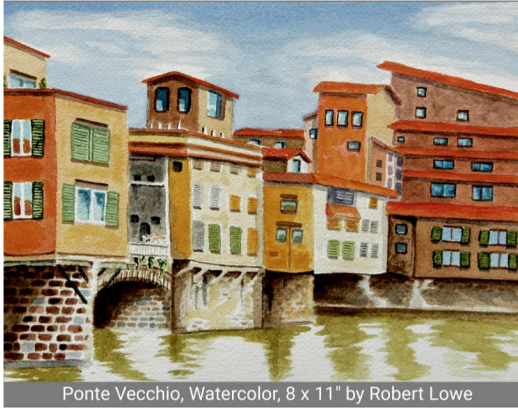


Platonic Poetry in Red, Laser cut acrylic/nuts & bolts, 6 x 6 x 6" by Michael Kolitsky

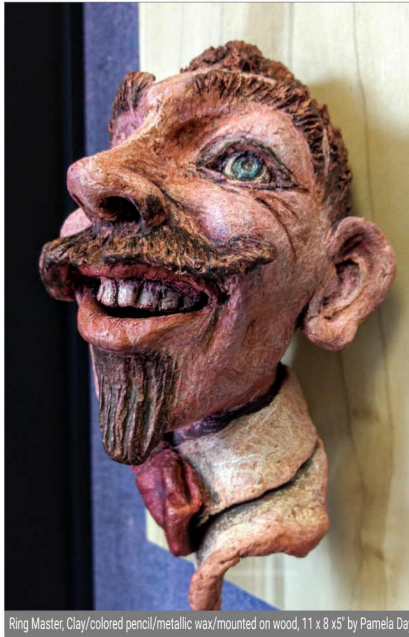


Funding is made possible in part by the New Jersey State Council on the Arts/Department of State, a Partner Agency of the National Endowment for the Arts through a grant to the Burlington County Board of County Commissioners.





Ponte Vecchio, Watercolor, 8 x 11" by Robert Lowe



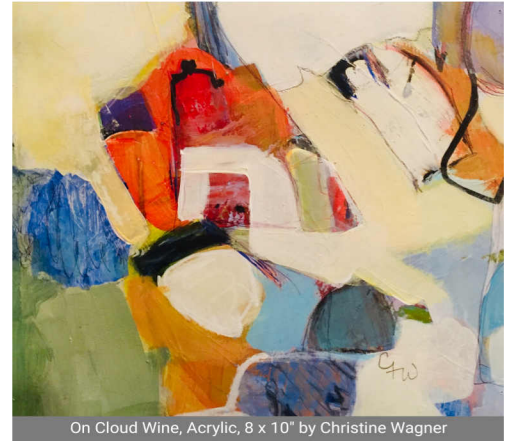
Ring Master, Clay/colored pencil/metallic wax/mounted on wood, 11 x 8 x 5" by Pamela Day



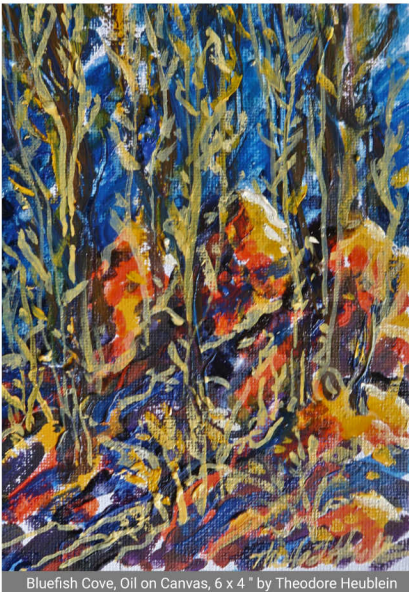
Chevy Deluxe, Photograph, 8 x 12" by Tom Holding



Daydreams are Elementary, Mixed media, 7 x 12" by Caryn Blum



On Cloud Wine, Acrylic, 8 x 10" by Christine Wagner



Bluefish Cove, Oil on Canvas, 6 x 4" by Theodore Heublein



Galaxy Connections, Watercolor, 3.5 x 5" by Sandy Sandy



Deer, Acrylic, 5 x 7" by Marlene Craig

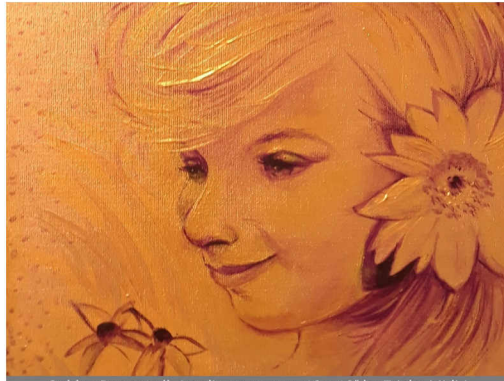


Funding is made possible in part by the New Jersey State Council on the Arts/Department of State, a Partner Agency of the National Endowment for the Arts through a grant to the Burlington County Board of County Commissioners.





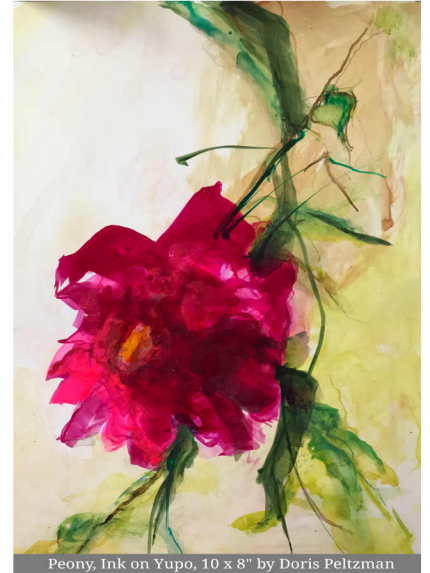
Batsto Carriages, Watercolor, 9.25 x 6.25 " by Richard Hoffman



Golden Dreamer II, Acrylic on canvas, 12 x 12" by Ericka Midiri



Three Pears, Oil on linen, 6 x 12 " by Susan Barnes



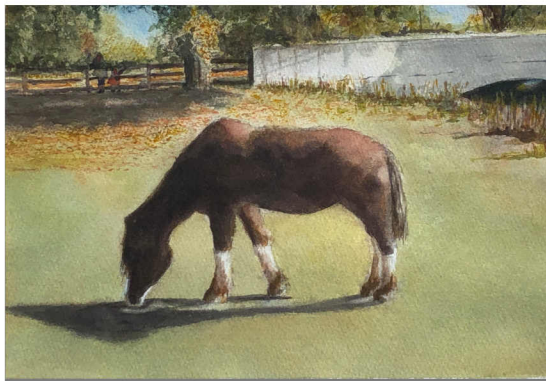
Peony, Ink on Yupo, 10 x 8" by Doris Peltzman



Sunflowers Dance, Oil on canvas, 12 x 9 " by Elena Maksina



Mushrooms, Oil on canvas, 8 x 10 " by Judy Fusco



Retired (unframed), Watercolor, 7.5 x 10 " by Jeffrey Chorney



Pink in My Mind, Acrylic/Embroidery thread/beads, 5 x 7 " by Maddey Wiker

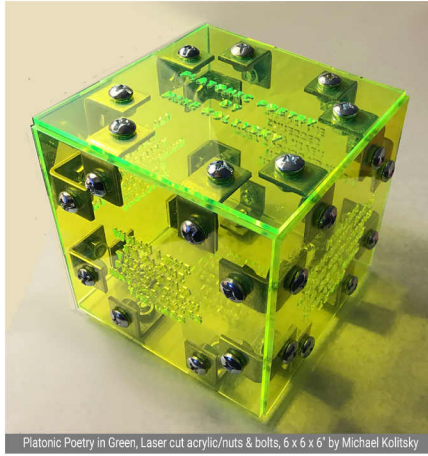


Funding is made possible in part by the New Jersey State Council on the Arts/Department of State, a Partner Agency of the National Endowment for the Arts through a grant to the Burlington County Board of County Commissioners.





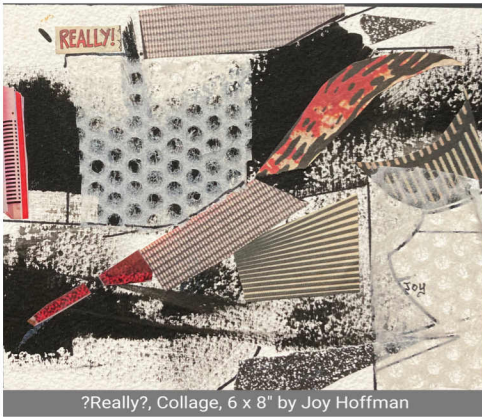
Barred Owl with Copper frame, Ceramic tile on wood, 10 x 9" by Diane Emerson



Platonic Poetry in Green, Laser cut acrylic/nuts & bolts, 6 x 6 x 6" by Michael Kolitsky



The Bull on the Barn, Photograph, 10 x 12" by Tom Holding



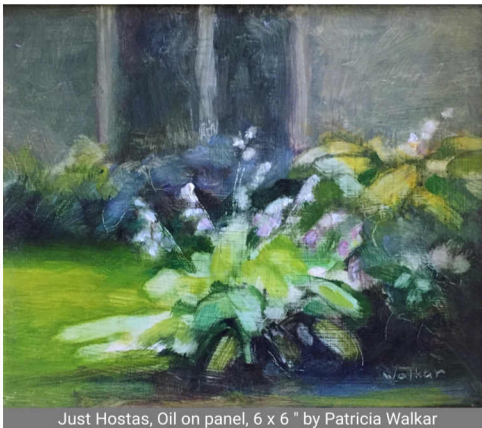
?Really?, Collage, 6 x 8" by Joy Hoffman



Merry & Bright, Pressed flower collage, 10 x 8" by Margaret Romano



Elementary Explorers, Mixed media, 7 x 12" by Caryn Blum



Just Hostas, Oil on panel, 6 x 6" by Patricia Walkar



Yosemite Dawn 2, Oil on Canvas, 5 x 7" by Theodore Heublein



Funding is made possible in part by the New Jersey State Council on the Arts/Department of State, a Partner Agency of the National Endowment for the Arts through a grant to the Burlington County Board of County Commissioners.

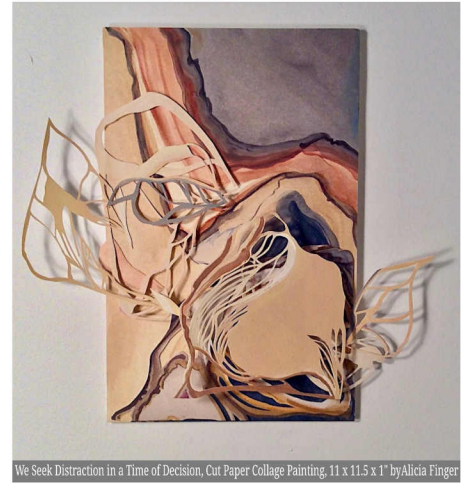




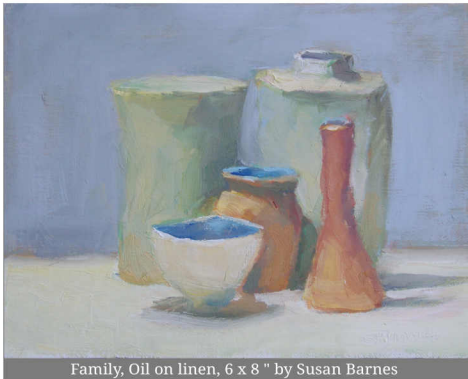
Impatience, Ink on Yupo, 8 x 8" by Doris Peltzman



The Mountains Are in Us, Watercolor, 5 x 3.5" by Sandy Sandy



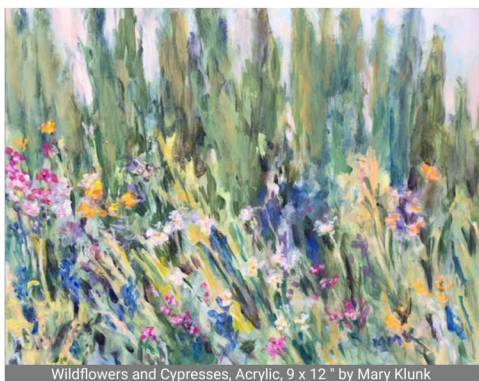
We Seek Distraction in a Time of Decision, Cut Paper Collage Painting, 11 x 11.5 x 1" by Alicia Finger



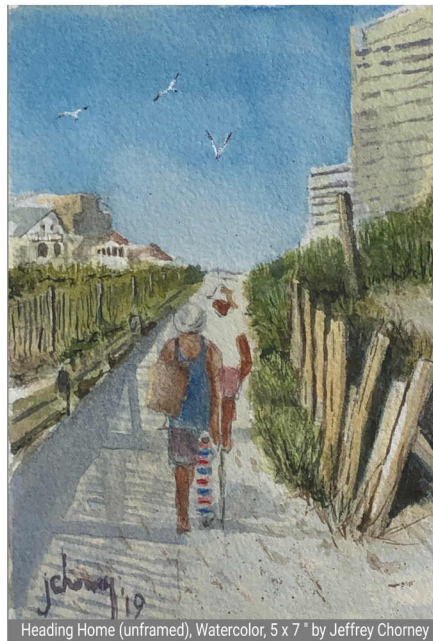
Family, Oil on linen, 6 x 8" by Susan Barnes



Dog Gone, Dog to Come, Dog Bone, Etching on BFK paper, 10 x 12" by Dan Kirchhefer



Wildflowers and Cypresses, Acrylic, 9 x 12" by Mary Klunk



Heading Home (unframed), Watercolor, 5 x 7" by Jeffrey Chorney



Toadstool, Photograph, 8 x 12" by Jon Barnes



Funding is made possible in part by the New Jersey State Council on the Arts/Department of State, a Partner Agency of the National Endowment for the Arts through a grant to the Burlington County Board of County Commissioners.

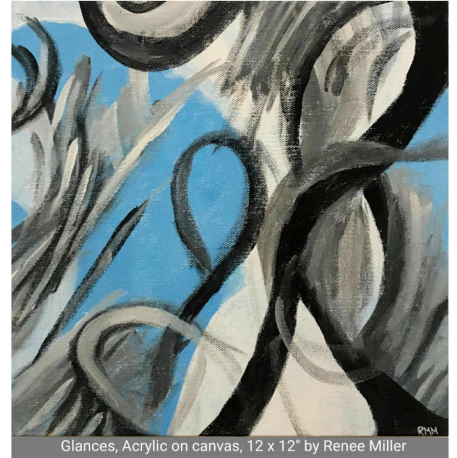




Country Road, Oil on panel, 9 x 12" by Patricia Walker



Through Rose-Colored Glasses, Clay/colored pencil/metallic wax/mounted on wood, 11 x 8 x 5" by Pamela Day



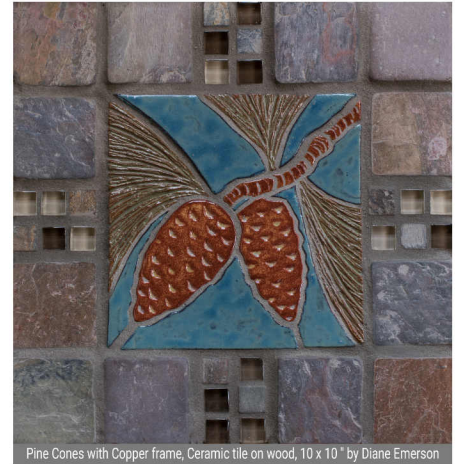
Glances, Acrylic on canvas, 12 x 12" by Renee Miller



Drift 03, Plant & silk fibers on fishing net, 12 x 8" by Amy Usdin



Born By Fire 2, High fire Stoneware, 5.75 x 3.5" by Amy Schnitzer



Pine Cones with Copper frame, Ceramic tile on wood, 10 x 10" by Diane Emerson



Yosemite Dawn, Oil on Canvas, 8 x 10" by Theodore Heublein



Rushing Water, Photograph, 8 x 12" by Tom Holding

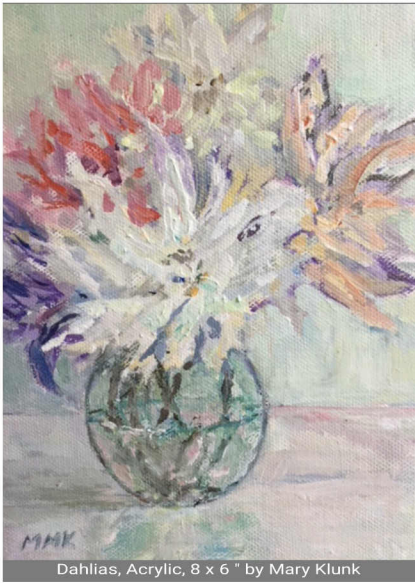


4 Flowers, Watercolor, 6.5 x 7.5" by Joy Hoffman



Funding is made possible in part by the New Jersey State Council on the Arts/Department of State, a Partner Agency of the National Endowment for the Arts through a grant to the Burlington County Board of County Commissioners.

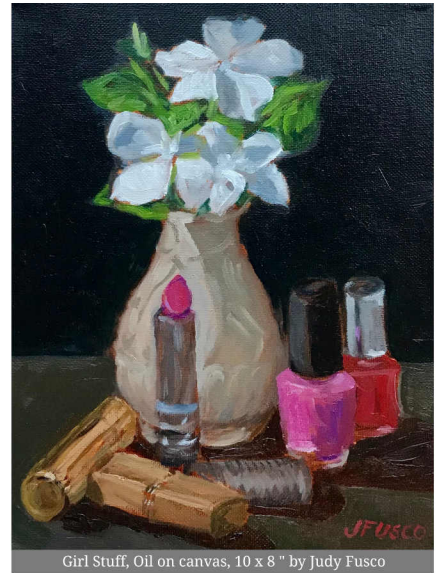




Dahlias, Acrylic, 8 x 6 " by Mary Klunk



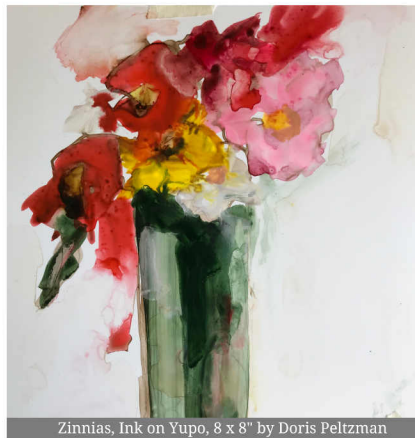
Wisdom All Around, Watercolor, 5 x 3.5" by Sandy Sandy



Girl Stuff, Oil on canvas, 10 x 8 " by Judy Fusco



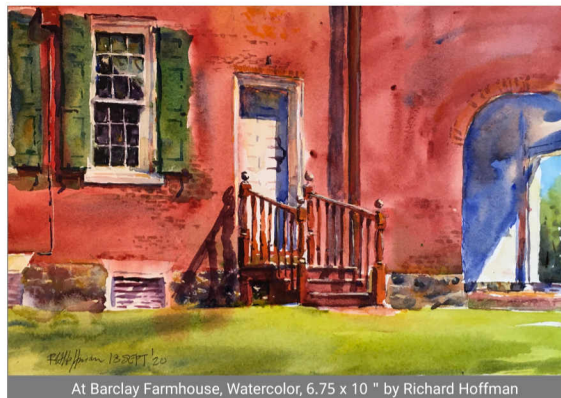
Blue & White & Pear, Oil on board, 5 x 7 " by Susan Barnes



Zinnias, Ink on Yupo, 8 x 8" by Doris Peltzman



Watermelons, Oil on Canvas, 8 x 10" by Dino Sistilli



At Barclay Farmhouse, Watercolor, 6.75 x 10 " by Richard Hoffman



Funding is made possible in part by the New Jersey State Council on the Arts/Department of State, a Partner Agency of the National Endowment for the Arts through a grant to the Burlington County Board of County Commissioners.

